

I see people in the water — that means it's safe, right?

- Most beach closings are due to Escherichia coli (E. coli) levels.
- E. coli is an indicator used to test for fecal contamination, which can carry dangerous pathogens that can make humans sick and in rare cases, even cause death.
 - Flu-like symptoms
 - Wound infections
- When E. coli levels exceed the standard set by the State of Michigan, swimmers are at increased risk for infection.
- E. coli tests provide accurate readings.
- However, there is a lag in the time the data is processed until results are known.
- By the time these warnings are posted, there have already been people swimming in the contaminated water for up to three days.

WARNING

Water sampled at this location indicates:

This public beach is not safe for swimming!

BACTERIA Exceeds Limits for Safe Swimming

Investigation into the source of the contamination is ongoing. This notice remains in effect until SAFE BACTERIA samples are obtained.

Contact the Central Michigan District Health Department at 989.773.5921 for more information on beach safety.
www.cmdhd.org

SCIT Planning Department

If you have any questions, please feel free to contact SCIT Water Quality Staff at:

989.775.4014

www.sagchip.org/planning/

2451 Nish-Na-Be-Anong Rd., Mt. Pleasant, MI 48858

Is Your

RIVER

Safe for

RECREATION?

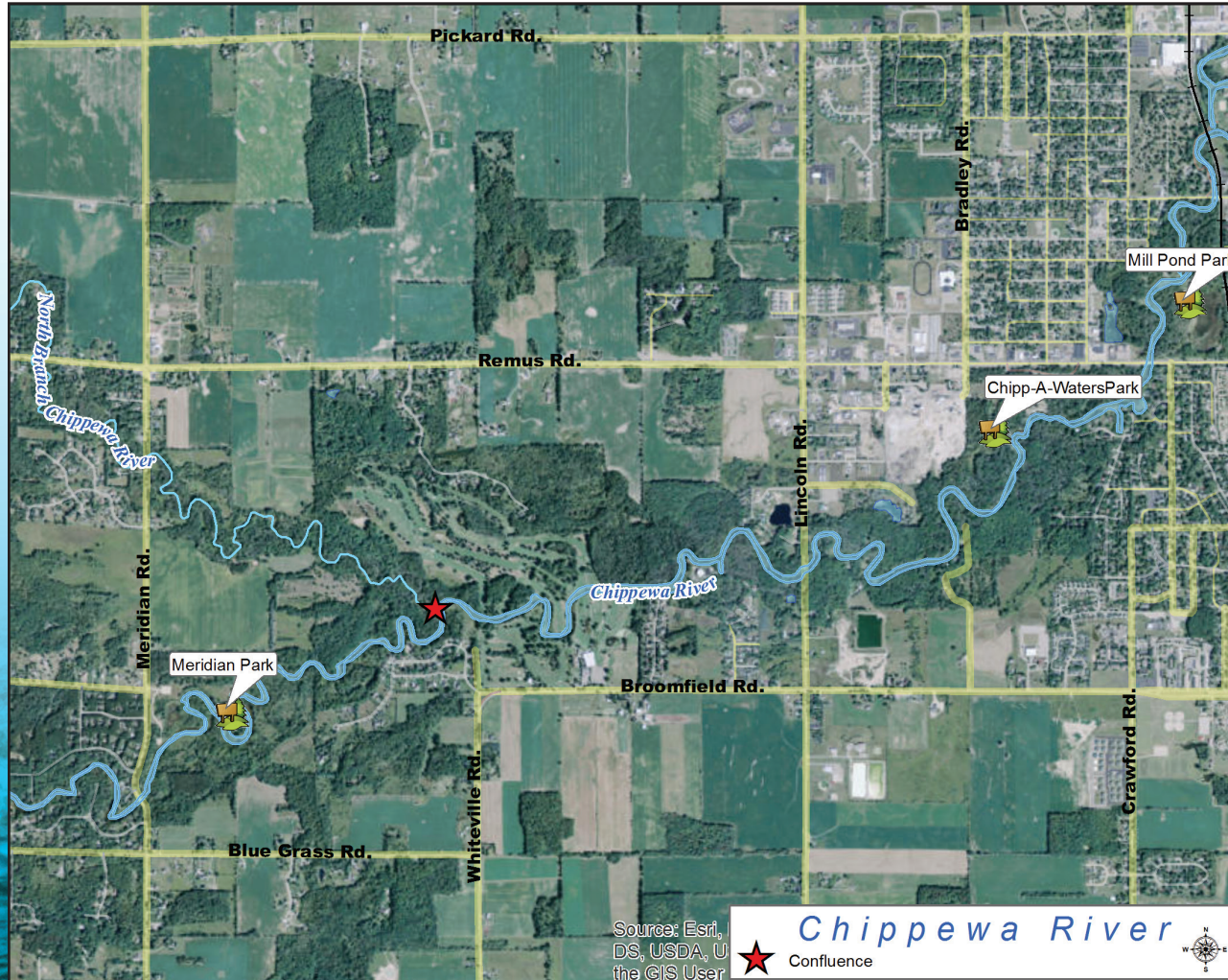


**Working Together To
Protect Our Environment**



**Working Together To
Protect Our Environment**

Chippewa River Confluence



How can I be a part of the **SOLUTION?**

- 💧 Tribal Members can sign up for the Private Onsite Wastewater Treatment System Program (POWTS) to pump and inspect your septic tank at no charge.
- 💧 Failing, overflowing and/or non-existent septic systems are contributing to a majority of the bacteria.
- 💧 It is not always apparent when a septic system is not functioning properly.
- 💧 Crucial to keep up with regular inspections and maintenance.
- 💧 Septic tanks should be pumped and inspected every 1-3 years.
- 💧 Call or visit the Planning Department for more information.

When is the **WATER SAFE?**

- 💧 Check you local health department website or Michigan Beach Guard website.
- 💧 For more information on the Central Michigan District Health Department, please call 989.773.5921 or visit www.deq.state.mi.us/beach/
- 💧 Local results from SCIT's Water Program are posted to the SCIT Facebook page.
- 💧 There tend to be large inputs of E. coli from the North Branch of the Chippewa River. Recreating upstream (*west*) of this confluence is much safer. (*See map.*)
- 💧 Watch the weather—avoid swimming with the few days following a rain event.
- 💧 Advisory signs imply that the river is contaminated in the area and downstream, not solely at the location of the posting.
- 💧 Do not swim with open cuts or wounds as they can get infected.